



Nebraska On-Farm Research Network

Years: 2013
Title: Corn Hybrids
Crop: Corn
County: Red Willow
Study ID: 135145201301
Objective: Compare "DroughtGuard" vs "AquaMax" corn hybrids
Treatments: DKC 63-55RIB YT2R - "DroughtGard"
P-1498AM AM/LL/RR2/AQ - "AquaMax"

Sponsored by:



In partnership with:



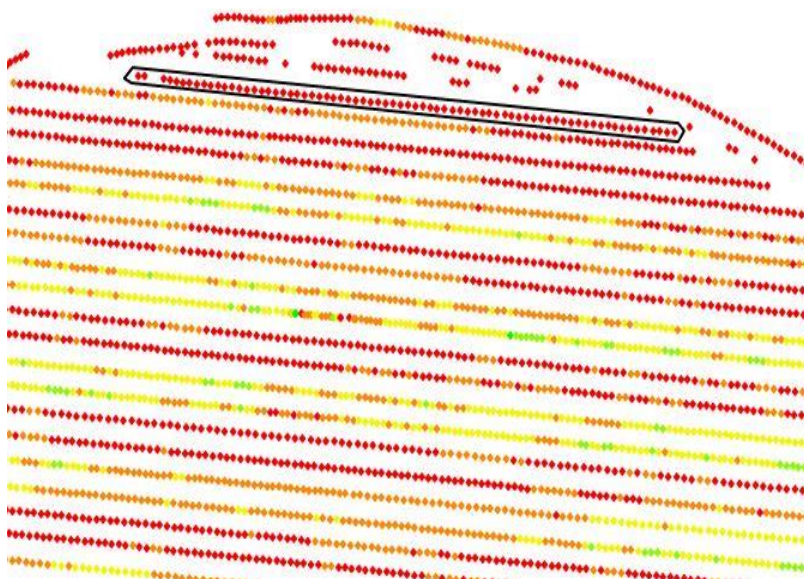
Extension is a Division of the Institute of Agriculture and Natural Resources at the University of Nebraska–Lincoln cooperating with the Counties and the United States Department of Agriculture.

University of Nebraska–Lincoln Extension educational programs abide with the nondiscrimination policies of the University of Nebraska–Lincoln and the United States Department of Agriculture.



Nebraska On-Farm Research Network

Information: 2013 Corn - Drought Tolerant Hybrids



Sponsored by:



In partnership with:

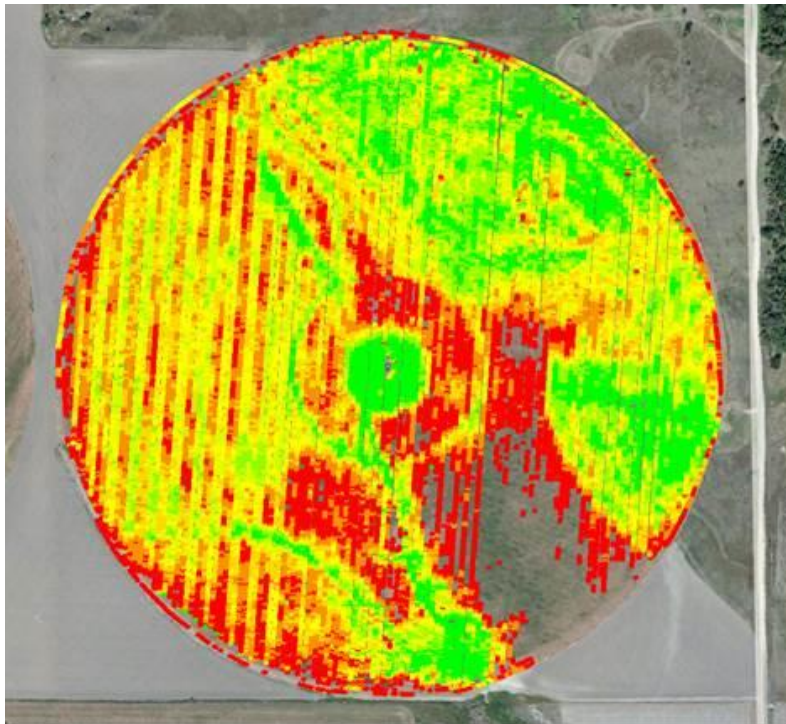


Extension is a Division of the Institute of Agriculture and Natural Resources at the University of Nebraska–Lincoln cooperating with the Counties and the United States Department of Agriculture.

University of Nebraska–Lincoln Extension educational programs abide with the nondiscrimination policies of the University of Nebraska–Lincoln and the United States Department of Agriculture.



Nebraska On-Farm Research Network



Sponsored by:



In partnership with:



Extension is a Division of the Institute of Agriculture and Natural Resources at the University of Nebraska–Lincoln cooperating with the Counties and the United States Department of Agriculture.

University of Nebraska–Lincoln Extension educational programs abide with the nondiscrimination policies of the University of Nebraska–Lincoln and the United States Department of Agriculture.



Nebraska On-Farm Research Network

Results: 2013

Corn - Drought Tolerant Hybrid

	Yield	Moisture	Cost/A
DKC 63-55RIB YT2R - "DroughtGuard"	79 A	13.78B	\$106
P-1498AM AM/LL/RR2/AQ - "AquaMax"	44 B	18.35 A	\$82
Prob>/T/	0.000***	0.000***	

Holdrege and Keith silt loams *Uly and Coly silk loam on slopes. Crop Rotation
corn/corn/soy - Prior Crop Corn **IRRIGATION Total:** 8.6 **RAINFALL Total:**
9.11 May-1.29 Jun-2.11 Jul-0.76 Aug-2.03 Sep-2.35 Oct-0.57

**(DroughtGuard vs. AquaMax on 300 gal/min (LOW Capacity) well 29
reps)**-Great plant health for AquaMax. Major significance in yield increase for
DroughtGuard. Irrigation: Center pvt; drop nozzles (not iWob)

SUMMARY: The DroughtGuard hybrid outperformed the AquaMax hybrid on a
low capacity well with minimal subsoil moisture. Need additional years of data.

Sponsored by:



In partnership with:



Extension is a Division of the Institute of Agriculture and Natural Resources at the University of Nebraska–Lincoln cooperating with the Counties and the United States Department of Agriculture.

University of Nebraska–Lincoln Extension educational programs abide with the nondiscrimination policies of the University of Nebraska–Lincoln and the United States Department of Agriculture.